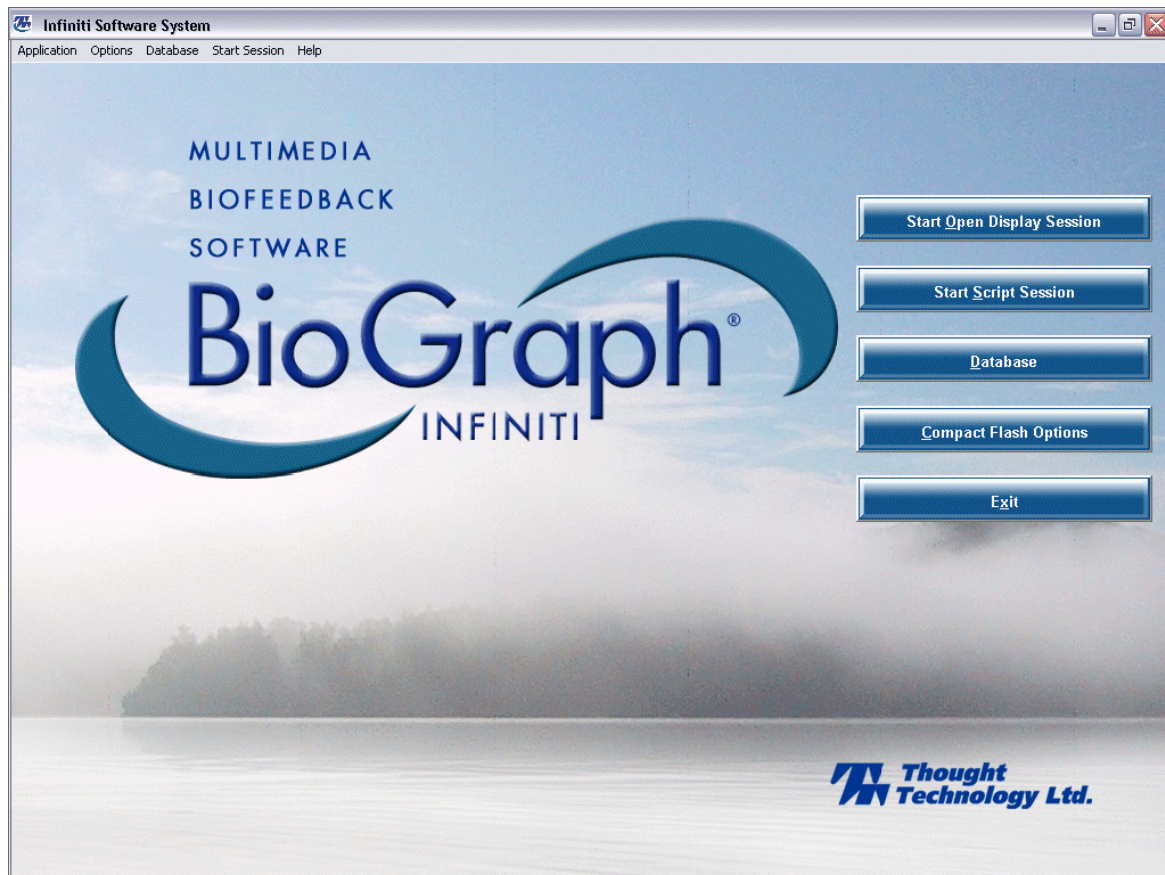


# BioGraph Infiniti

## *Upgrade Instructions*



*Thought Technology Ltd.*

2180 Belgrave Avenue, Montreal, Quebec H4A 2L8 Canada

Tel: (800) 361-3651 • (514) 489-8251 Fax: (514) 489-8255

E-mail: [mail@thoughttechnology.com](mailto:mail@thoughttechnology.com)

Website: [www.thoughttechnology.com](http://www.thoughttechnology.com)

# Table of Contents

<b>Welcome .....</b>	<b>3</b>
<b>Updating Older Application Suite Components .....</b>	<b>3</b>

*Manual # SA7914 ver 3.1*

## Welcome

---

Welcome to your new BioGraph Infiniti System. This document will help you to go through the system upgrade. Please, first refer to your Installation Instructions Manual and follow the instructions (BioGraph Infiniti CD section).

*Note: the sequence followed by the downloadable set-up is similar except for some of the dialog box text, which may vary slightly.*

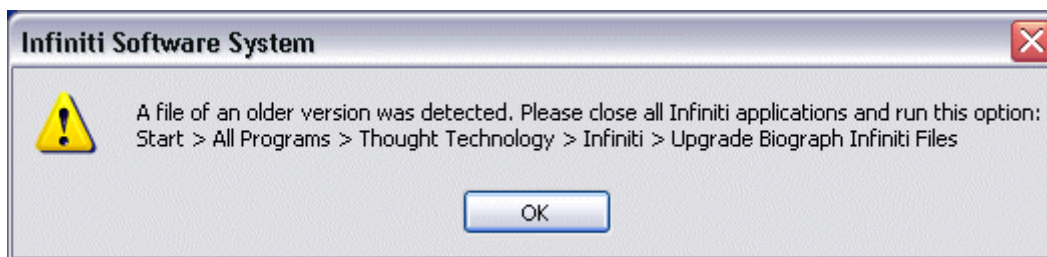
## Updating Older Application Suite Components

---

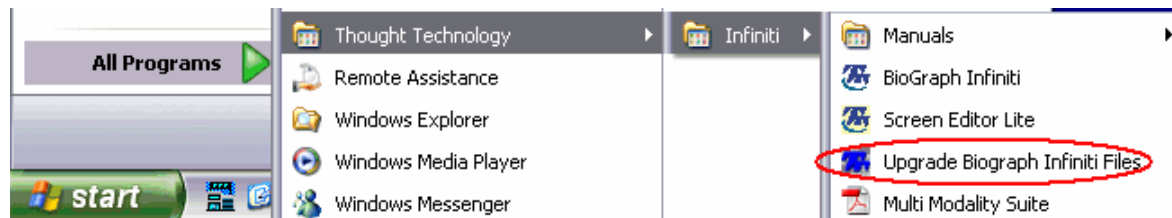
If you have installed older version of your Application Suites after installing, or updating to the new version, you have to upgrade the component file from that suite (including channel sets, screens and scripts) to the new version.

*Note: If your application Suites were already installed when you updated BioGraph Infiniti to the new version, either from the System CD or from the downloadable update program, the upgrade applets will run automatically as part of the set-up process. You have to run them manually any time you copy older files to your system or any time you install a Suite for an older version of the program.*

Whenever BioGraph Infiniti finds a file of an older version, you get the following message:



When you see this message, simply close all running BioGraph Infiniti programs (BioGraph Infiniti and/or any of the editors) and click the **Start** button. Then, select **All Programs > Thought Technology > Infiniti > Upgrade BioGraph Infiniti Files** option, as shown below:



You should see a number of pop-up messages like the one below, informing you that the program is "Processing channel sets...", "Processing screens...", "Processing scripts...", etc.



Depending on the number of files to convert, this may take a few minutes. Once the suite components have been upgraded, you can start using BioGraph Infiniti and the Developer Tools.